

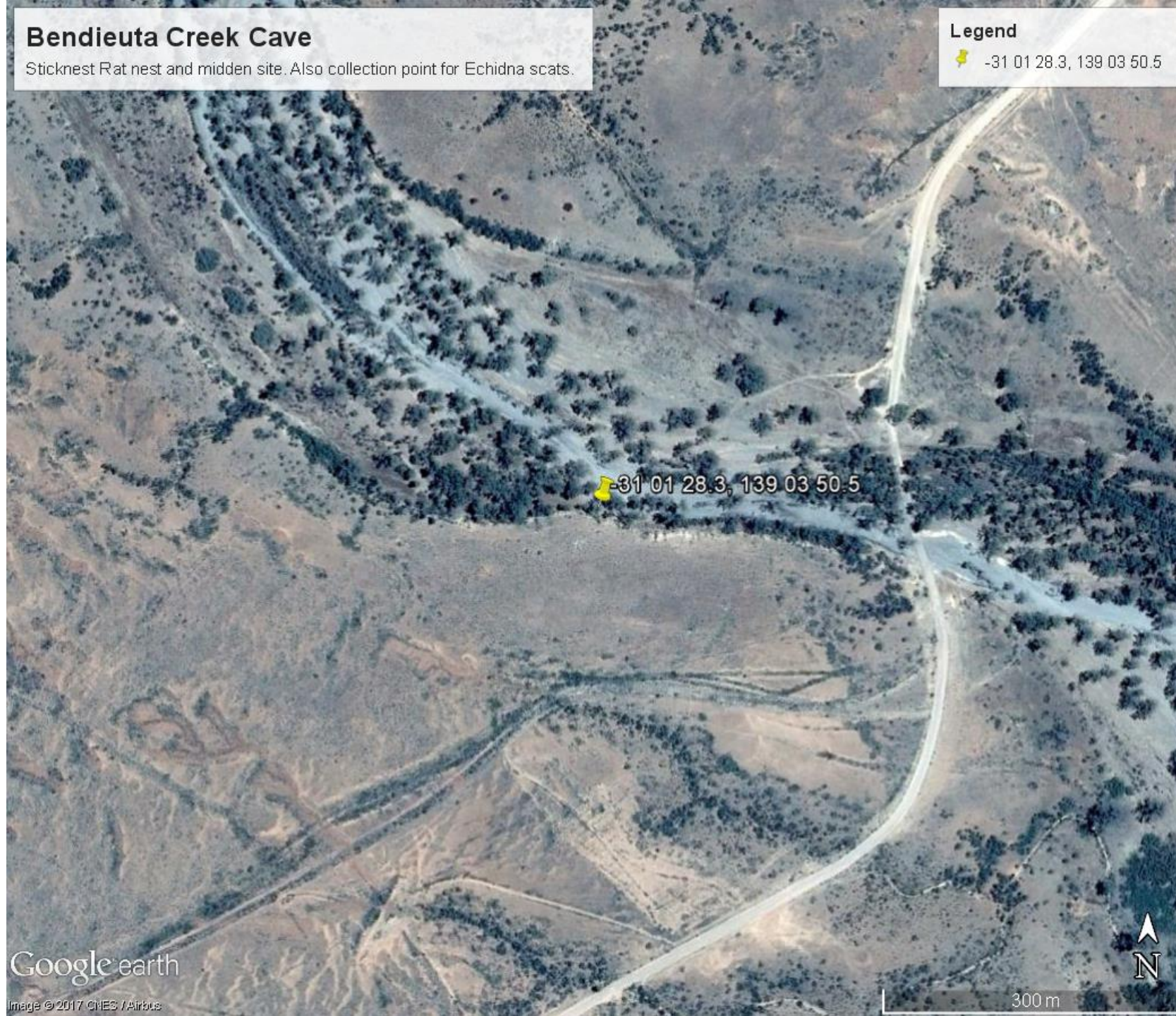
Bendieuta Creek Cave

Sticknest Rat nest and midden site. Also collection point for Echidna scats.

Legend

📍 -31 01 28.3, 139 03 50.5

South
Australian
Museum,
Waterhouse
Club trip to
Chambers
Gorge,
September
4-9, 2017



Google earth

Image © 2017 CHES / Airbus

300 m

South Australian Museum, Waterhouse Club trip to Chambers Gorge, September 4-9, 2017

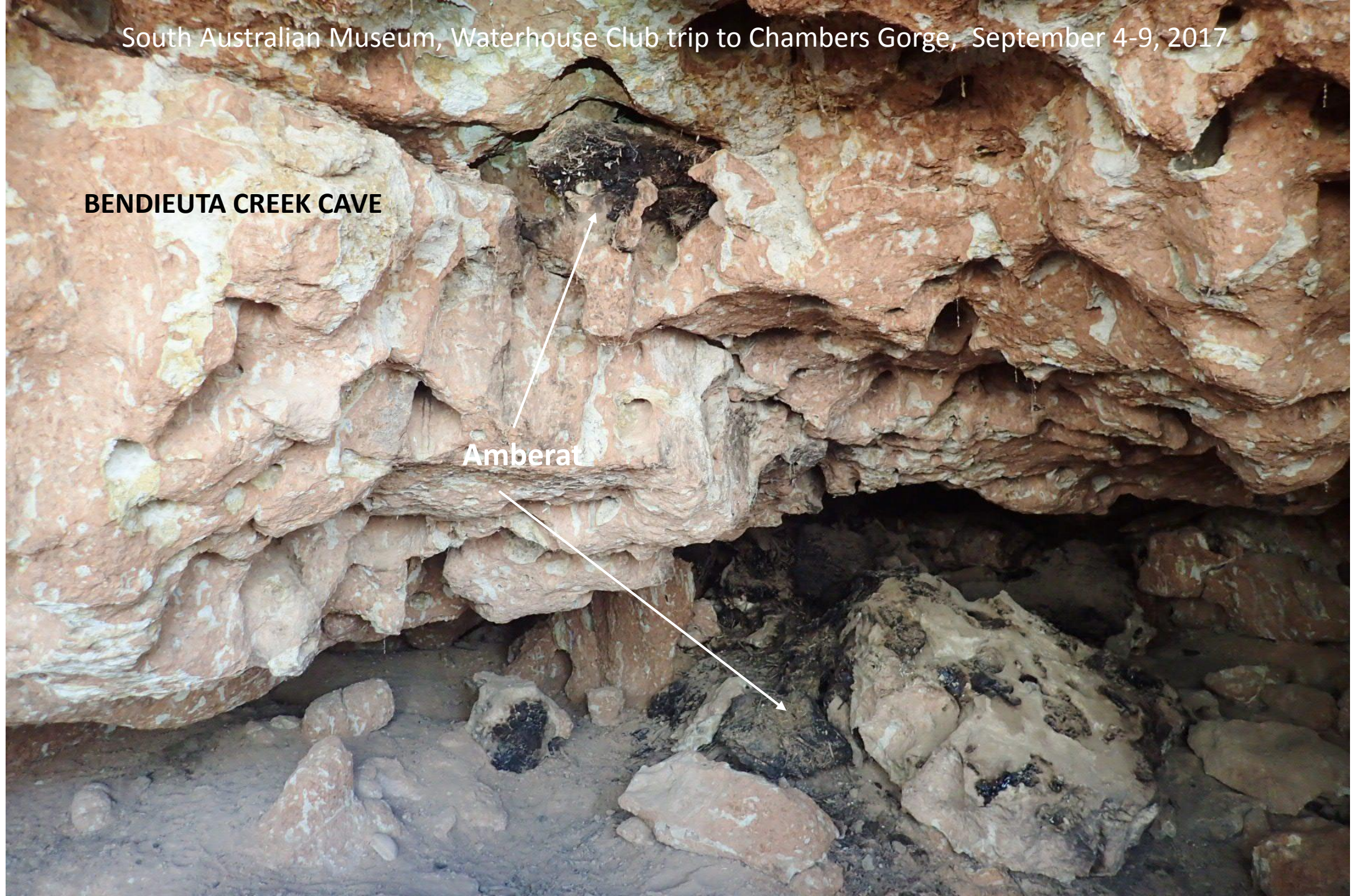
Stick-nest Rat Site, Bendieuta Creek Cave
Thursday, 7 September 2017



South Australian Museum, Waterhouse Club trip to Chambers Gorge, September 4-9, 2017

BENDIEUTA CREEK CAVE

Amberat



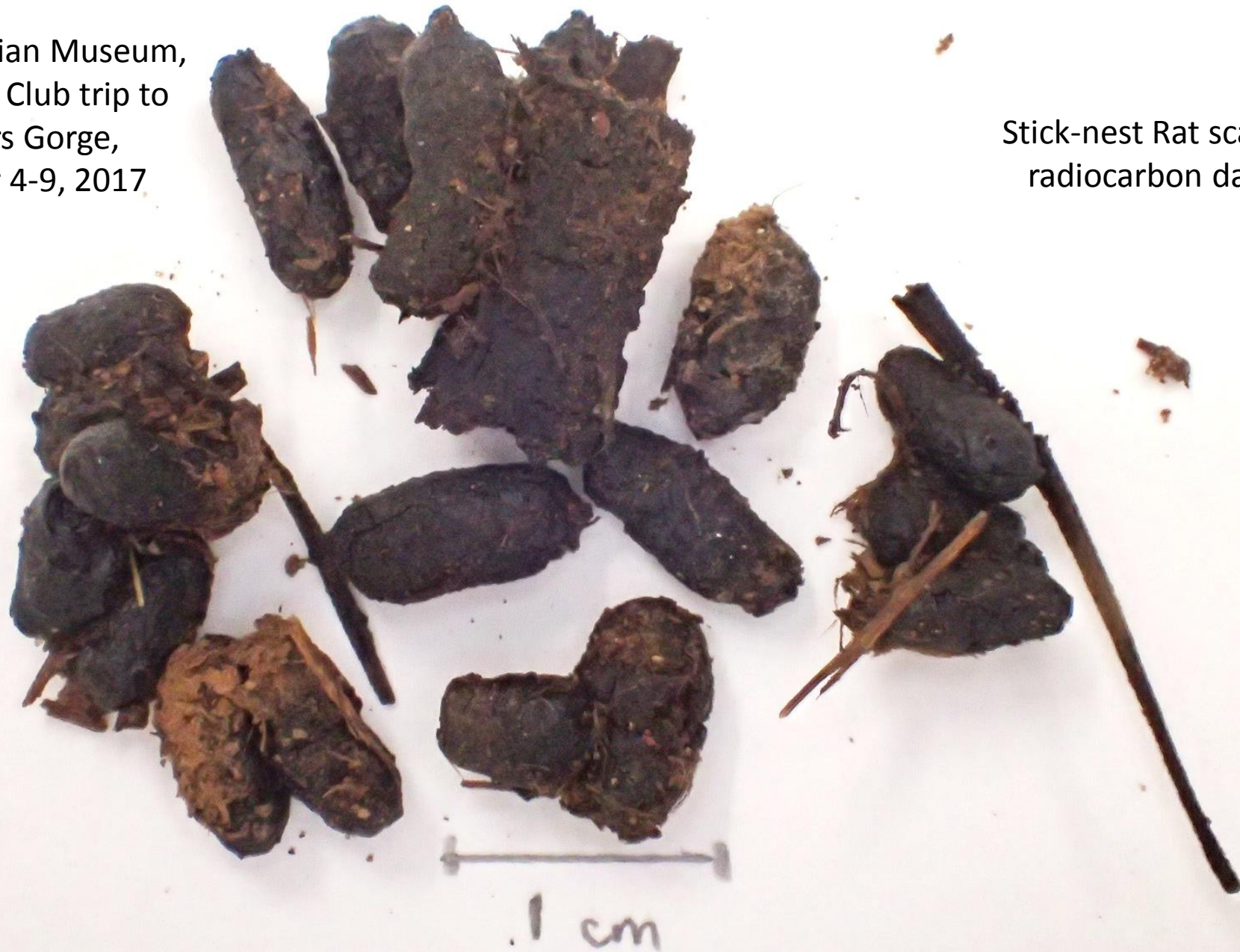
South Australian Museum, Waterhouse Club trip to Chambers Gorge, September 4-9, 2017

BENDIEUTA CREEK CAVE, STICK-NEST RAT MIDDEN



South Australian Museum,
Waterhouse Club trip to
Chambers Gorge,
September 4-9, 2017

Stick-nest Rat scats for
radiocarbon dating



Collected from Bendieuta Creek Cave by Jane Axon and Pauline Cudmore on Monday 4 September 2017

South
Australian
Museum,
Waterhouse
Club trip to
Chambers
Gorge,
September
4-9, 2017



Amberat collected from
Bendieuta Creek Cave on
Monday, September 4, 2017



Euro scats

Goat scats



Scats collected from Bendieuta Creek Cave
Thursday, 7 September 2017

TRACING PAST ANIMAL
OCCUPATION FROM SCATS.
* = now extinct in the region

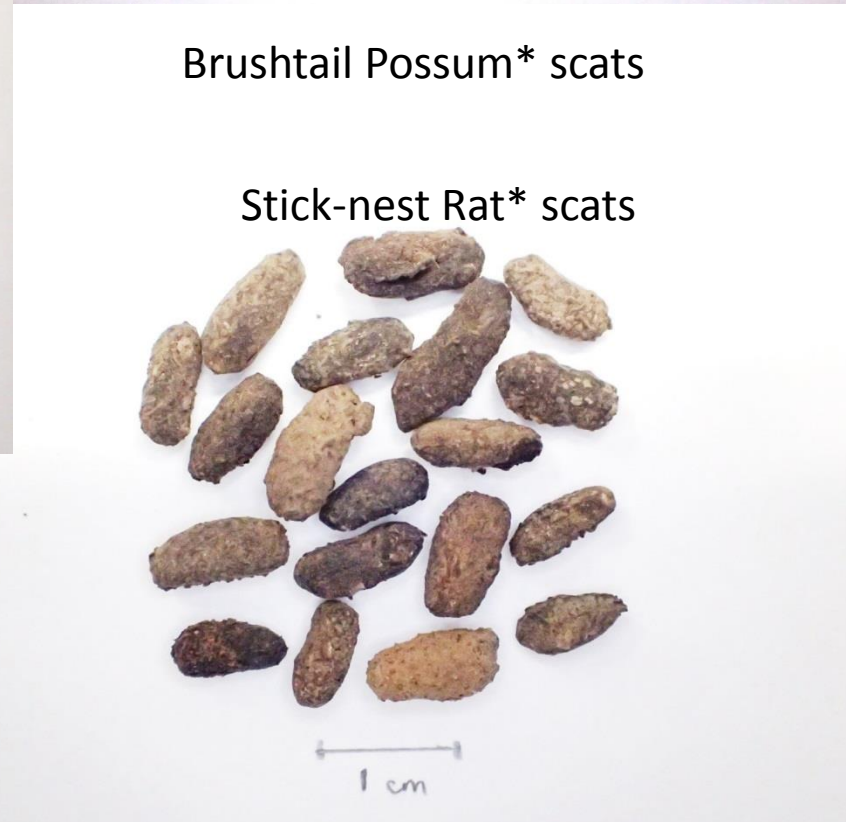


Yellow-footed Rock-wallaby scat

Echidna scats were also
collected from this cave but
not photographed.



Brushtail Possum* scats



Stick-nest Rat* scats

Mount Chambers, Chambers Gorge

Collection point for Echidna scats, near the top of Mt Chambers.

Legend

📍 -30 57 43, 139 13 09

South
Australian
Museum,
Waterhouse
Club trip to
Chambers
Gorge,
September
4-9, 2017



Chambers Gorge, Waterhouse Club trip 4-9 September, 2017

Collection points for Echidna scats, near the top of Mt Chambers and in Frome Valley.

Legend

South
Australian
Museum,
Waterhouse
Club trip to
Chambers
Gorge,
September
4-9, 2017



South
Australian
Museum,
Waterhouse
Club trip to
Chambers
Gorge,
September
4-9, 2017

Remains of a Stick-nest Rat nest with scats below Mount Chambers
Tuesday, 5 September 2017



South Australian Museum,
Waterhouse Club trip to
Chambers Gorge,
September 4-9, 2017

Chambers Gorge
Thursday, 7 September 2017



Remains of a juvenile Goat in a Wedge-tailed Eagle pellet, with hair and part of a hoof.

Chambers Gorge

First collection point for juvenile macropod collected in Frome Valley on 8/9/2017.

Legend

South
Australian
Museum,
Waterhouse
Club trip to
Chambers
Gorge,
September
4-9, 2017



Chambers Gorge

Second collection point for juvenile macropod collected at the base of a cave near the entrance to Waterfall Gorge on 8/9/2017.

Legend

📍 St George Bluff -30 57 10.55 S, 139 16 3.44 E

📍 -30 56 49.5, 139 15 13

📍 -30 57 10.55, 139 16 3.44

South
Australian
Museum,
Waterhouse
Club trip to
Chambers
Gorge,
September
4-9, 2017

Google earth

Image © 2017 CNES / Airbus

1 km

↑
N

Moorowie Copper Mine

Near eastern end of Chambers Gorge

Legend


 -30 58 48.6, 139 16 25.5

Cave G2 directly above G1

Cave G1
Miners' Cave

Cave E

Moorowie
Formation

 -30 58 48.6, 139 16 25.5

South
Australian
Museum,
Waterhouse
Club trip to
Chambers
Gorge,
September
4-9, 2017

Google Earth

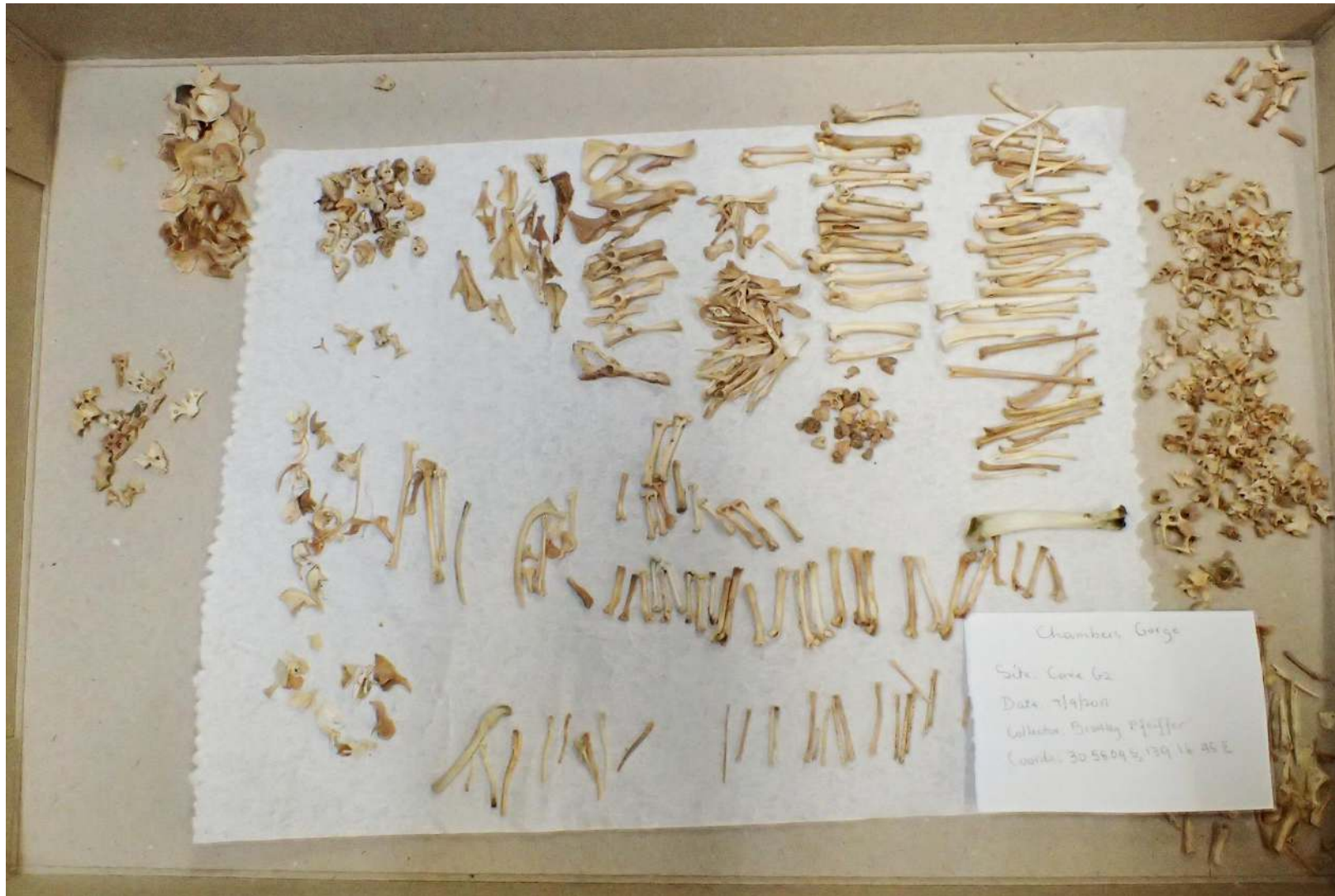
Image © 2017 CNES / Airbus

800 m



TRACING PAST ANIMAL OCCUPATION
IN AN AREA FROM BONES IN CAVES

South
Australian
Museum,
Waterhouse
Club trip to
Chambers
Gorge,
September
4-9, 2017



Post-cranial bone from Cave G2 above Miners' Cave at the eastern end of Chambers Gorge,
collected by Bradley Pfeiffer with the help of Tony Morphett on Friday 8 September 2017

South Australian Museum, Waterhouse Club trip to Chambers Gorge, September 4-9, 2017

Jane Axon emerging from Cave E at the eastern end of Chambers Gorge,
after collecting bones from an old owl roost

Juv. Western Barred Bandicoot*
buccal view



*Perameles bougainville**

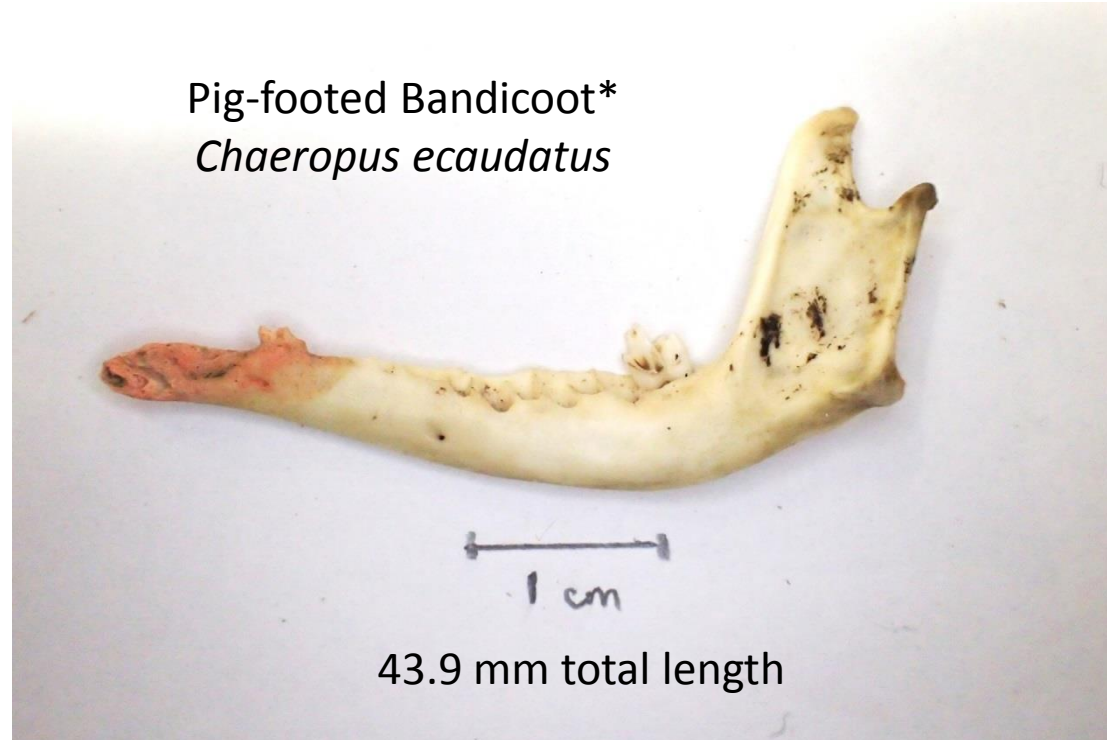


Juv. Western Barred Bandicoot*
lingual view

Bones collected from Cave E, eastern end
of Chambers Gorge Friday, 8 September
2017

Tracing past animal occupation
from bones in old owl roosts.
* = now extinct in the region

Pig-footed Bandicoot*
Chaeropus ecaudatus



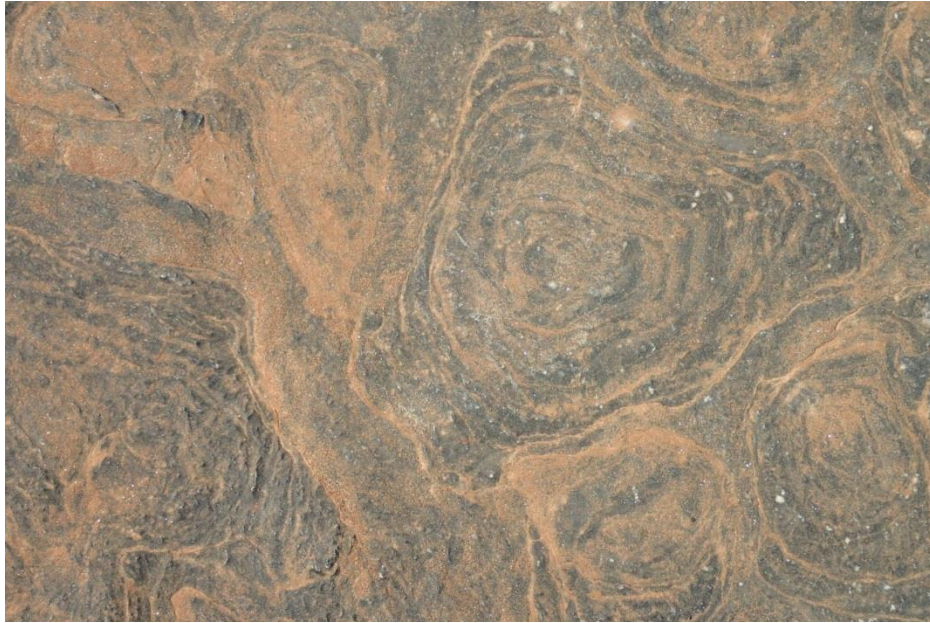
Collected by Jane Axon, Friday 8 September 2017

Long-haired Rat
Rattus villosissimus



Common in the area prior to
European occupation.
Now an occasional visitor to
the Frome Plain adjacent to
Chambers Gorge

South Australian Museum, Waterhouse Club trip to Chambers Gorge, September 4-9, 2017



L: **Stromatolites**
on top of Mt
Chambers and in
Waterfall Gorge



R: **Archaeocyathid
limestone fossils** in
the Moorowie
Formation eastern
end of Chambers
Gorge



L: Unusual
structure in the
Trezona Formation
SW of Mt Chambers



R: Entrance to the
main shaft of the
**Moorowie Copper
Mine** eastern end
of Chambers Gorge

South Australian Museum, Waterhouse Club trip to Chambers Gorge, September 4-9, 2017



Above: Goats drinking at the saline waterholes in Mt Chambers Creek, Chambers Gorge during September 2017

Below: Euros dig holes in the sand and gravel adjacent to the waterholes to drink less saline water



Waterhouse Club trip to Chambers Gorge 4-9 September 2017

Animal diggings



Echidna digging into an ant nest



As the salinity level rises in the main creek, Euros dig into the sand and gravel where the salinity level is lower than in the adjacent waterhole.

South Australian Museum, Waterhouse Club trip to Chambers Gorge, September 4-9, 2017

SIGNS OF ABORIGINAL OCCUPATION



Bark removed
from tree to make
a wooden disc
called a *yutu*

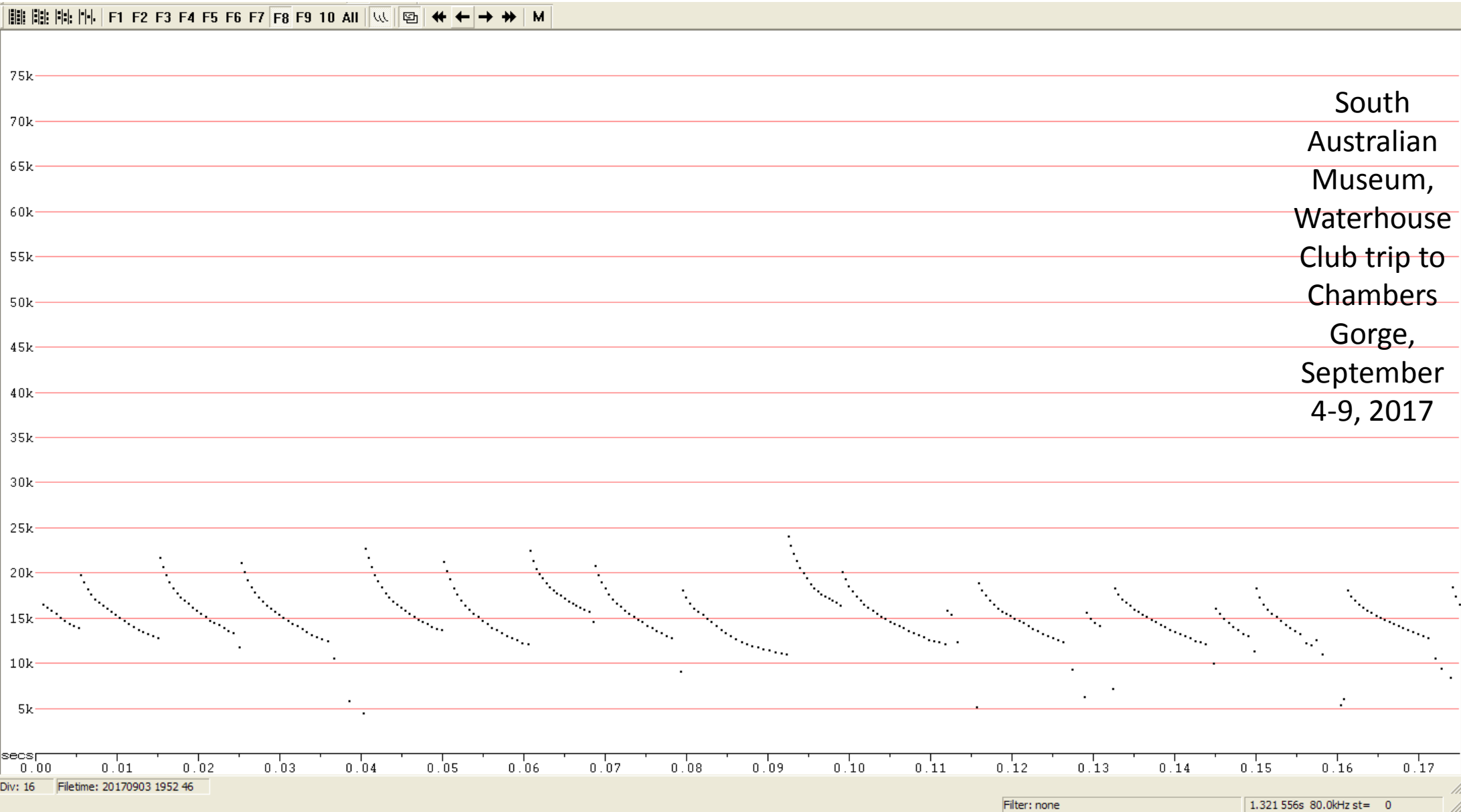
Aboriginal fire places
and stone tools for
grinding,
Chambers Gorge



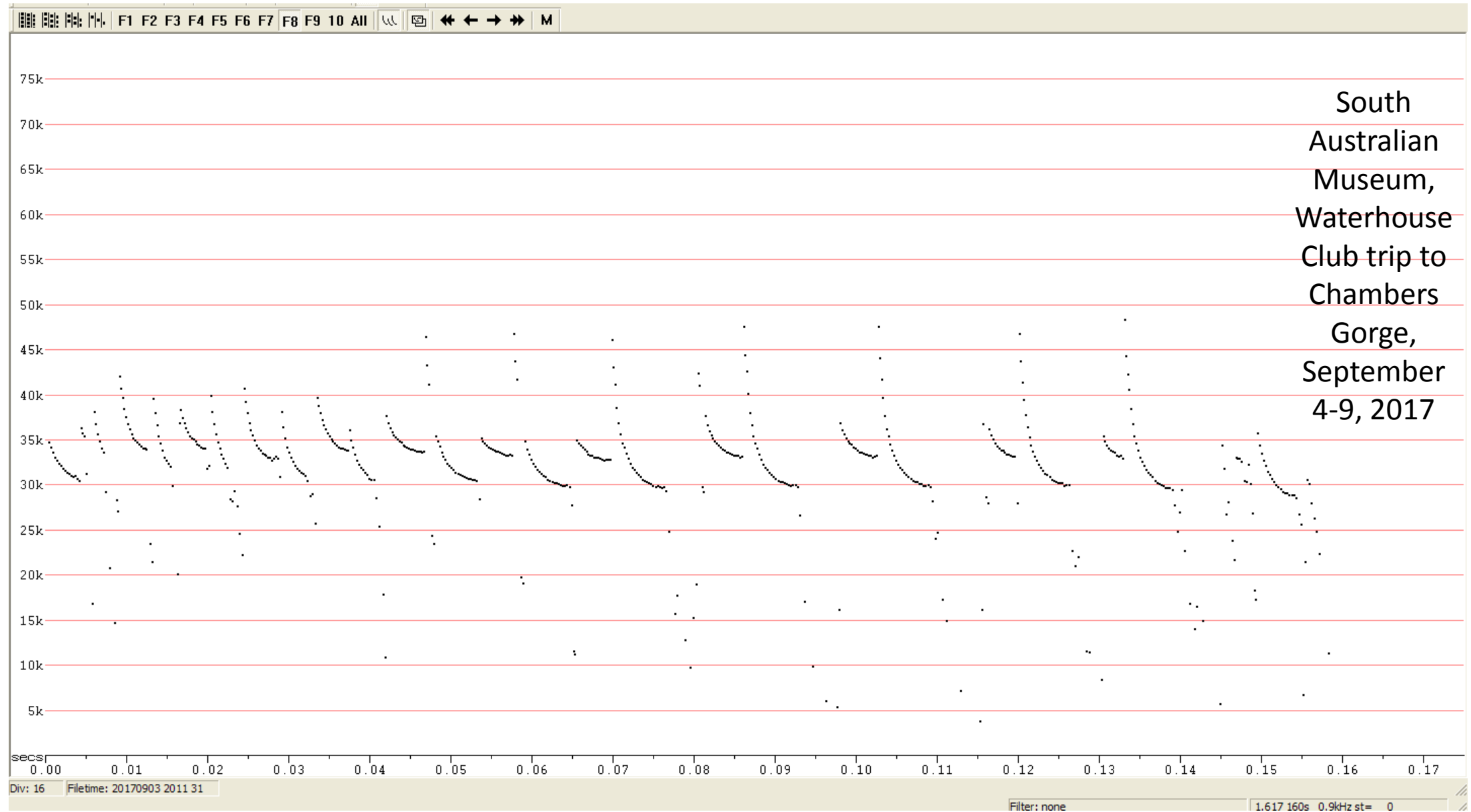
Aboriginal
engravings
(petroglyphs) at
Chambers Gorge



S.A. MUSEUM WATERHOUSE CLUB VISIT TO CHAMBERS GORGE,
Sunday, 3 September 2017
White-striped Free-tailed Bat (*Austronomus australis*)



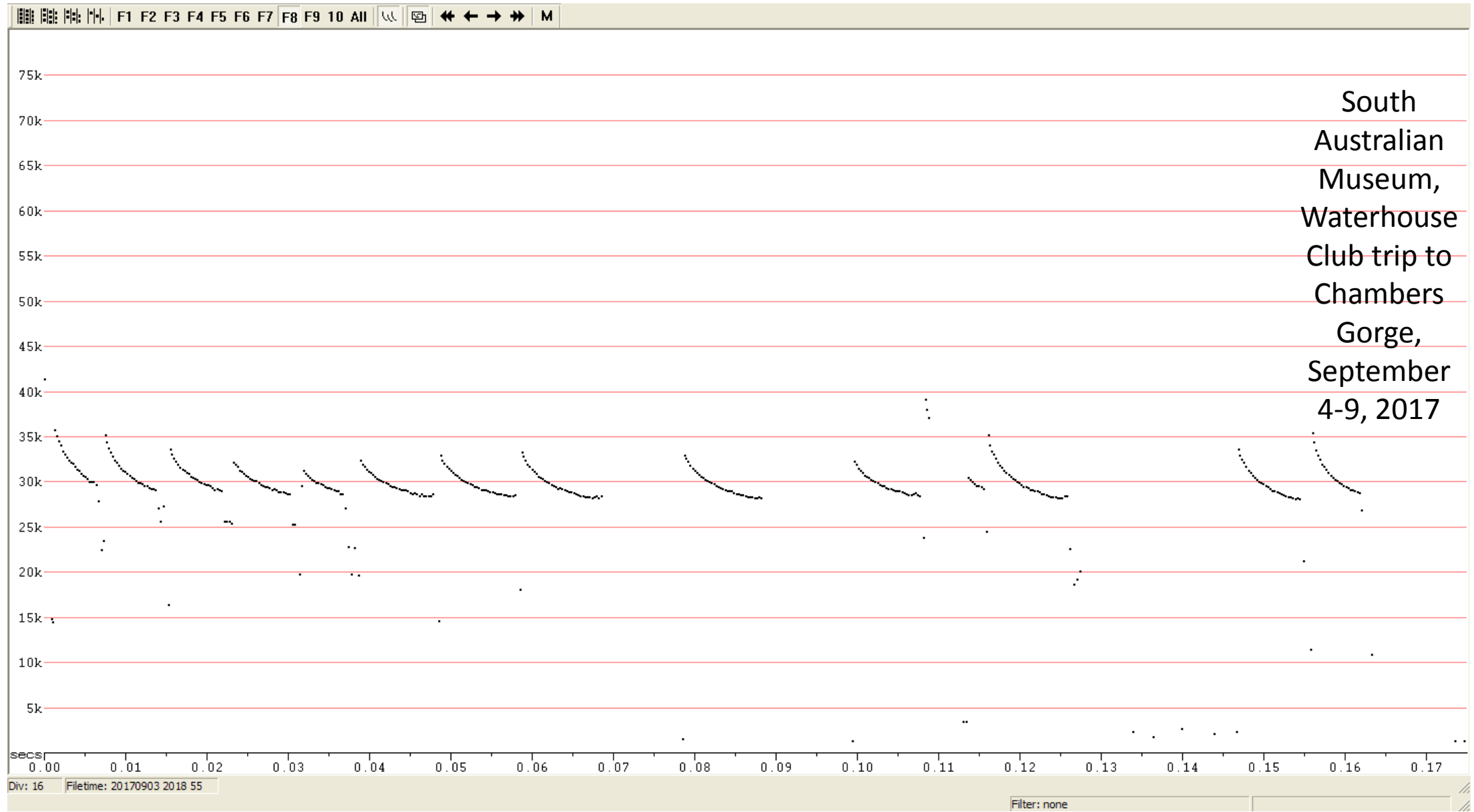
S.A. MUSEUM WATERHOUSE CLUB VISIT TO CHAMBERS GORGE,
Sunday, 3 September 2017.
Gould's Wattled Bat (*Chalinolobus gouldii*)



S.A. MUSEUM WATERHOUSE CLUB VISIT TO CHAMBERS GORGE

Sunday, 3 September 2017

Inland Broad-nosed Bat (*Scotorepens balstoni*)



S.A. MUSEUM WATERHOUSE CLUB VISIT TO CHAMBERS GORGE

Monday, 4 September 2017

Chocolate Wattled Bat (*Chalinolobus morio*)

