

EXPEDITIONS AND EVENTS – JUNE 2017 ISSUE

Information about Waterhouse Club expeditions and events is available on your Club's website: www.waterhouseclub.com. There you will also find Expression of Interest Forms to complete on line, and invitations to events and expeditions. We will continue to provide paper communications to members who prefer to receive Club news that way. In addition to the offerings below we are also planning other one day and/or weekend expeditions and will send you more information about these as planning progresses.

RECENT ADVENTURES

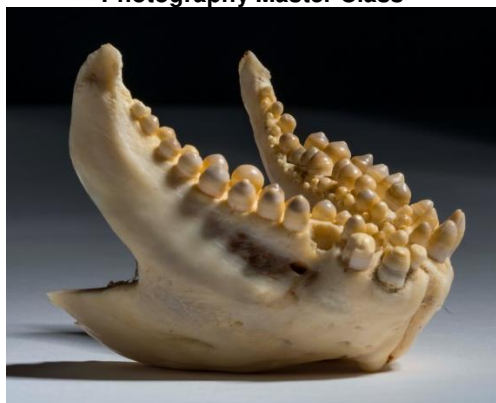
Coastal Curiosities Port Elliot, April 2017



Beach Combing



Photography Master Class



COMING UP - SAVE THESE DATES

15 August 2017 - 6.00 pm

Sprigg Lecture – Dr Elizabeth Reed, vertebrate palaeontologist at the University of Adelaide.

Dr Reed has a particular interest in records from caves and refining mega-fauna extinction records. Bookings open one month before the Lecture, via the Museum's website. Look out for the invitation in July.

4 – 10 September, 2017

Discovering Chambers Gorge

A rare opportunity to explore a visually stunning and fascinating corner of the Flinders Ranges. This fully catered for camping expedition will be based in an isolated section of the eastern Flinders Ranges. Our Museum Scientist will be Senior Researcher, Dr Graham Medlin. We will search for signs of aboriginal occupation, 18th - 20th century indications of usage, endemic bird species, reptiles, and other animals, as well as evidence of bats. All this as well as the geological and botanical features!

Expedition Leaders: Tim Tolley, with Jay and Ray Bessell

Tuesday evening 19 September 2017

The Waterhouse Club Annual General Meeting

You are invited to attend your Club's Annual General Meeting. Look out for the invitation in mid-August.

Event Co-ordinators: Margie Heylen and Natalie Rollinson

22 – 24 September 2017

Murray Lands Weekend Expedition – Journey of Discovery

Join us on this interesting expedition offering a diverse range of scientific, conservation, and environmental management topics with interpretation by Museum scientists: Professor Steve Donnellan whose scientific addresses are legendary for their wisdom and wit, and Dr Mary-Anne Binnie and Mr Ben McHenry who look after the Museum's earth sciences collections. On Sunday, Professor Justin Brookes, currently researching the potential impact of European Carp eradication program on the river system, will join us on a 2 hour river cruise.

Expedition Leaders: Gaye and Tim Fischer

2 – 5 November 2017

The Nuyts Archipelago, Head of Bight

Commencing in Ceduna, this expedition represents a unique opportunity to visit a difficult to access location and will appeal to the adventurous and scientifically curious, keen to explore the amazing world of insects. Our scientific leaders are Associate of the Museum, Professor Phil Weinstein, Head of School, Biological Sciences, University of Adelaide, and Dr Peter Hudson, Collection Manager Entomology at the Museum.

Expedition Leaders: Alastair and Rose Dow

7 November 2017 - 6.00 pm

Sprigg Lecture - Professor Phil Bland of the Curtin University.

Professor Bland will share research findings of the Desert Fireball Network Team. Bookings open one month before the Lecture, via the Museum's website. Look out for the invitation in October.

Note: Your Club is pursuing the possibility of an expedition "to the middle of nowhere" with the Desert Fireball Network Research Team looking for a meteorite. Watch this space!

14 November 2017 - 6.00 pm

Snakes Alive!!

Dr Mark Hutchinson, the Museum's Senior Research Scientist, Herpetology, will draw on the findings from his extensive research on the evolution, relationships, distribution and conservation of Australian reptiles, as well as specimens from the Museum's collection, as he takes us behind the scenes into CT scanning technology - a new research tool which is helping to unlock some of the mysteries of the most ancient branches of biology - the study of animal anatomy.

Event Co-ordinator: Margie Heylen

August 2018

Fabulous Fossils, East to West in Canada – IN GESTATION

Like South Australia, Canada boasts globally significant early-life fossils from the Ediacaran and Cambrian periods when complex life first evolved on our planet. Around 20 members will be able to join the Museum's charismatic scientist, Dr Diego Garcia-Bellido, on an exciting journey to see Canada's manifestation of these wonders! We will travel from the outstanding Ediacaran Fossils at Mistaken Point in Newfoundland across the continent to the famous Dinosaur Beds at Drumheller in Alberta. We journey on through the incredible Banff National Park to the world-renowned Burgess Shale location of the weird and wonderful fossils of the Cambrian Period, which overlap in time with our own Emu Bay fossils.

Expedition Leaders: Trevor and Carol Ireland

Mid-late September 2018

The Museum's Bi-annual Collecting Trip to the North East of South Australia - IN GESTATION

Dr Mark Hutchinson is the Museum's curator leading a group of Museum scientists on this collecting trip. The Museum has undertaken little survey work in this part of the State, and our task will be to update the Museum's knowledge and records of the fauna that inhabit this remote area. There will be much to see and do and the expedition will appeal to diverse interests. You will need to be self-sufficient in camping gear but our professional camp managers and caterers Mal and Val, will look after all aspects of the camp site and catering.

Expedition Leaders: Don and Margie Heylen

27 October to 3 November 2018

Swim with Whale Sharks – GET THIS OFF YOUR BUCKET LIST!! ONLY A FEW BERTHS AVAILABLE

This "True North" expedition is to the north coast of West Papua. A spectacular experience awaits you – not only will you swim with and study the gentle whale sharks you will also experience an exotic tropical coastline rich in other interests to pursue. The planned activities have broad appeal and include opportunities to swim, snorkel and scuba, fish, beach comb, enjoy stimulating scientific discussions, meet the Papuans and there will be time to read in the shade. Our Museum scientists will be the charismatic Professors Steve Donnellan and Greg Rouse.

Expedition Leaders: Ant and Mary Lou Simpson

19 February to 3 March 2019

To the Antarctic Peninsula in the track of John Rymill and Hubert Wilkins -- BOOK NOW!!

The Antarctic Peninsula is a location of astonishing beauty with rugged snow clad mountains, vistas of sea ice and prolific wildlife, often in staggering numbers. Mr Peter Rymill travels with us on the 85th anniversary of the original Rymill expedition to present the adventures of his father John, while Dr Mark Pharaoh of the Museum will elaborate on the colourful life of Sir Hubert Wilkins. Our ship will be the *Akademik Sergey Vavilov*, also known as One Ocean Voyager, operated by One Ocean. The ship was purpose built for research in polar regions

Expedition Leaders: Mark and Caroline Mussared

As the Club's expeditions and events are frequently over-subscribed we offer you an opportunity to "express early interest" in any of our offerings. You can do this on line at www.waterhouseclub.com, or by completing the form attached, by email waterhouseclub@samuseum.sa.gov.au, or telephone the Club office on 8203 9802. This will place your name on a priority list which will be held open for a few days following the mail out of invitations closer to the event. You will then be asked to confirm your registration by return reply. Registrations will be accepted in date order of receipt and a waiting list will be maintained if necessary.

Please Note:

Dates, venues, itineraries and scientific leaders may change as detailed planning progresses.